

# Violence Reduction Network

## Leicester, Leicestershire and Rutland



Violence  
Reduction  
Network



POLICE & CRIME  
COMMISSIONER  
for Leicestershire

Prevention | Partnership | Protection

# What is the Violence Reduction Network?

- LLR's version of a Violence Reduction Unit
- Based on the partnerships already in place and the extensive work already underway
- It includes a small central team responsible for arriving at a more comprehensive understanding of the problem and the development and implementation of a LLR Violence Prevention Strategy



@VR\_Network



Violence  
Reduction  
Network

# Vision and Mission

Our **vision** is for Leicester, Leicestershire and Rutland to be a place where all people, families and communities are safe, healthy and free of violence.

Our **mission** is to achieve “prevention through connection” by building an inclusive, collaborative and courageous network which will drive the short and long-term system-change required to successfully tackle the causes of violence across the life-course.

# Scope

- The VRN has adopted the WHO definition of violence:

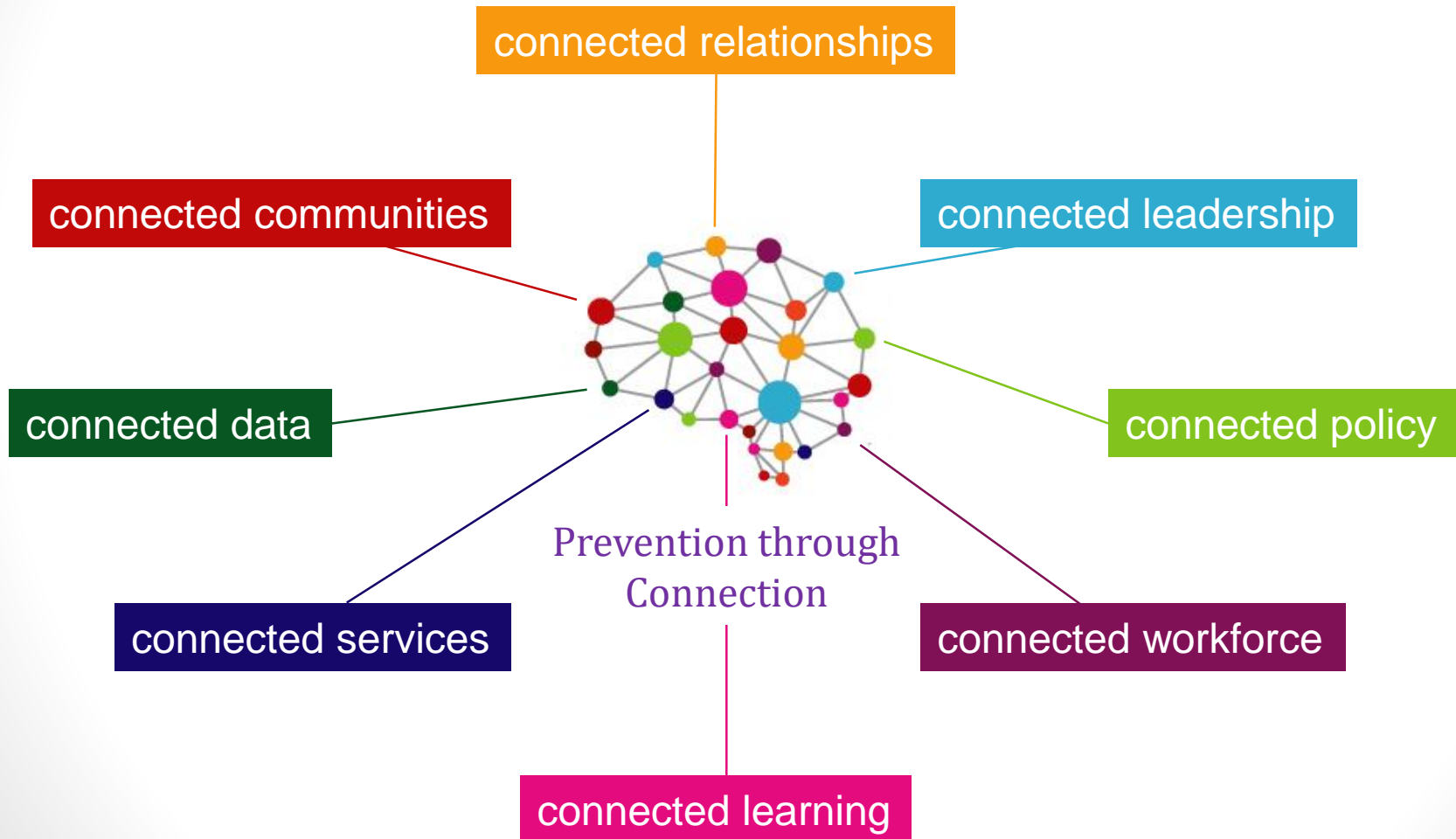
*“The intentional use of physical force or power, threatened or actual, against oneself, another person, or against a group or community, that either results in or has a high likelihood of resulting in injury, death, psychological harm, maldevelopment, or deprivation.”*

- Initial focus will be on youth violence (up to age 25) in public spaces and in particular serious youth violence involving weapons.
- However, research suggests opportunities for prevention will be missed if we only focus on one particular form of violence.

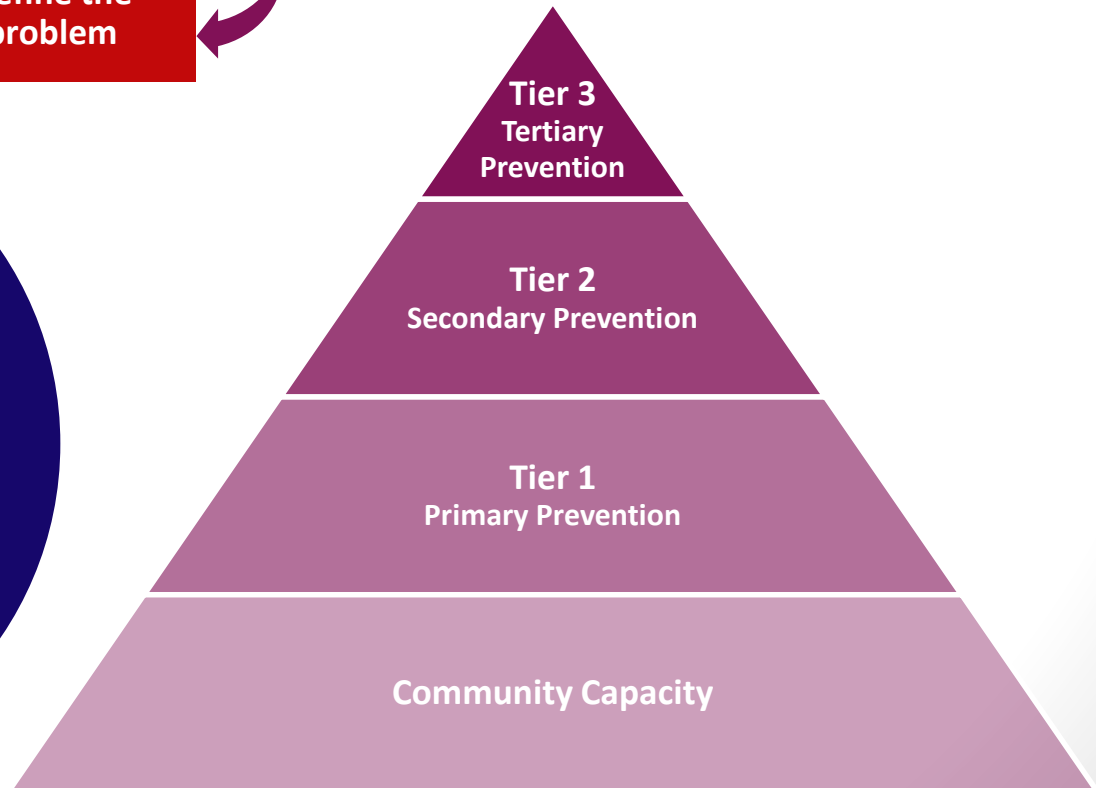
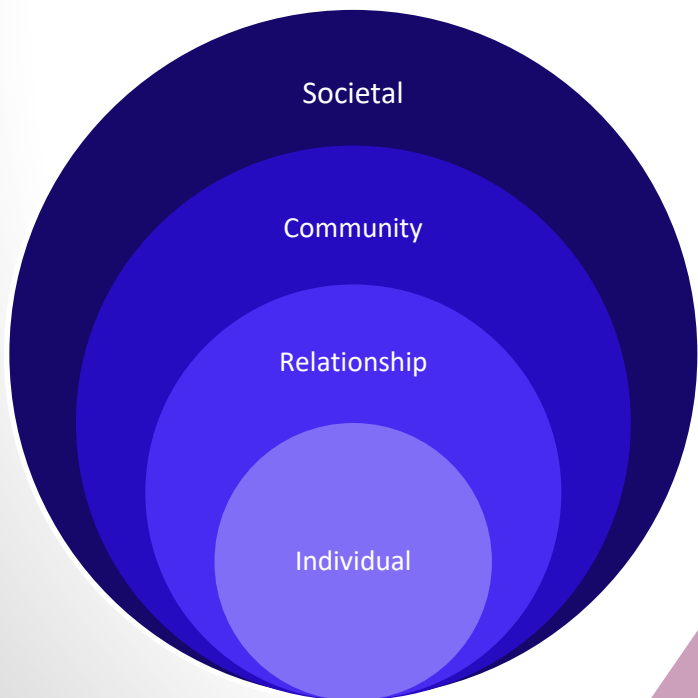
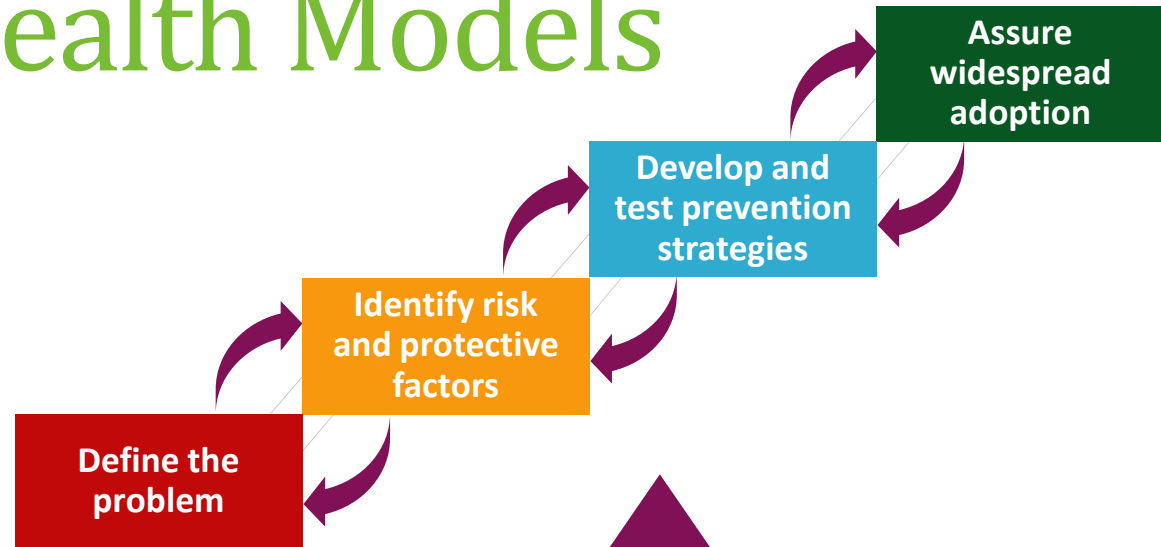
# Home Office Expectations

- Adopt a 'public health approach'
- Mandatory Products
  - A Strategic Needs Assessment; the 'problem profile'.
  - A Response Strategy.
- Success Measures
  - A reduction in hospital admissions for assaults with a knife or sharp object and especially among those victims aged under 25,
  - A reduction in knife-enabled serious violence and especially among those victims aged under 25,
  - A reduction in all non-domestic homicides and especially among those victims aged under 25 involving knives.
- 20% of funding to be spent on interventions
- Participation in an evaluation

# Our Approach



# Public Health Models



# The VRN Programme

- Direct governance is through the VRN Programme Board which has a direct line into SPB
- The Programme has 9 inter-related projects:

|                            |                              |                                    |
|----------------------------|------------------------------|------------------------------------|
| 1. Leadership & Governance | 2. VRN Development           | 3. Community Engagement            |
| 4. Service Mapping         | 5. Analysis & Evaluation     | 6. Service Design & Implementation |
| 7. Workforce Development   | 8. Communication & Campaigns | 9. Policy Integration              |



# Progress Update

- Establishing the programme
- Designing vision, brand and our communications strategy
- Establishing the central team
- Home Office visit
- Concluding service mapping
- Scoping a Serious Violence JSNA
- Collating the evidence into an 'effectiveness model' for health checks
- Commencing the ISA work in preparation for data collation
- Testing new services

# CSPs and the VRN

- CSPs are already in the business of preventing and reducing violence
- Opportunity to mobilise now for the new Serious Violence Public Health Duty
- Small working group to articulate the relationship between CSPs and the VRN?