

*'It's about our life, our health,
our care, our family and
our community'*



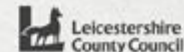
Better care together
Leicester, Leicestershire & Rutland health and social care



Social Prescribing link Workers and care-coordination funding update Mike Sandys November 2019

43

Agenda Item 7



Key updates for HWBB

- PCNs – Social Prescribing Link Workers
- PCNs – New service specifications
- Care Coordination – Good news

PCNs/Social Prescribing

Model for social prescribing



Social prescribing and community-based support

<https://www.england.nhs.uk/wp-content/uploads/2019/01/social-prescribing-community-based-support-summary-guide.pdf>

Page 11 – Model for SP

Page 18 – Draft Job Description

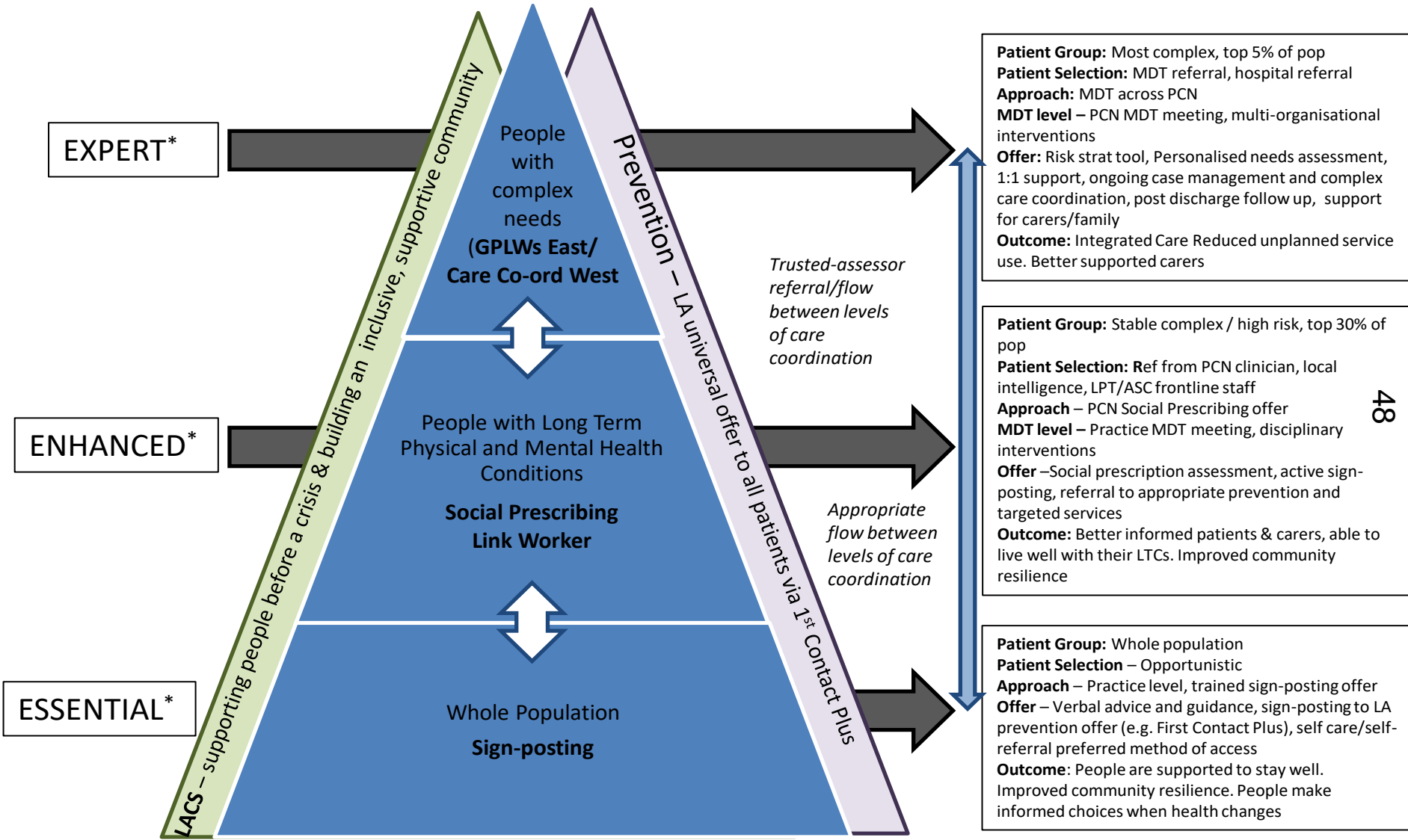
West Leicestershire

- 48 applicants for 9 SPLW roles
- Closed on 6 October 2019
- Shortlisting completed & interviews scheduled for w/c 25 November 2019
- Interview panel: Federation rep, Public Health rep & Patient rep
- Still finalising arrangements for a joint funded Team Leader role with Public Health

East Leics & Rutland

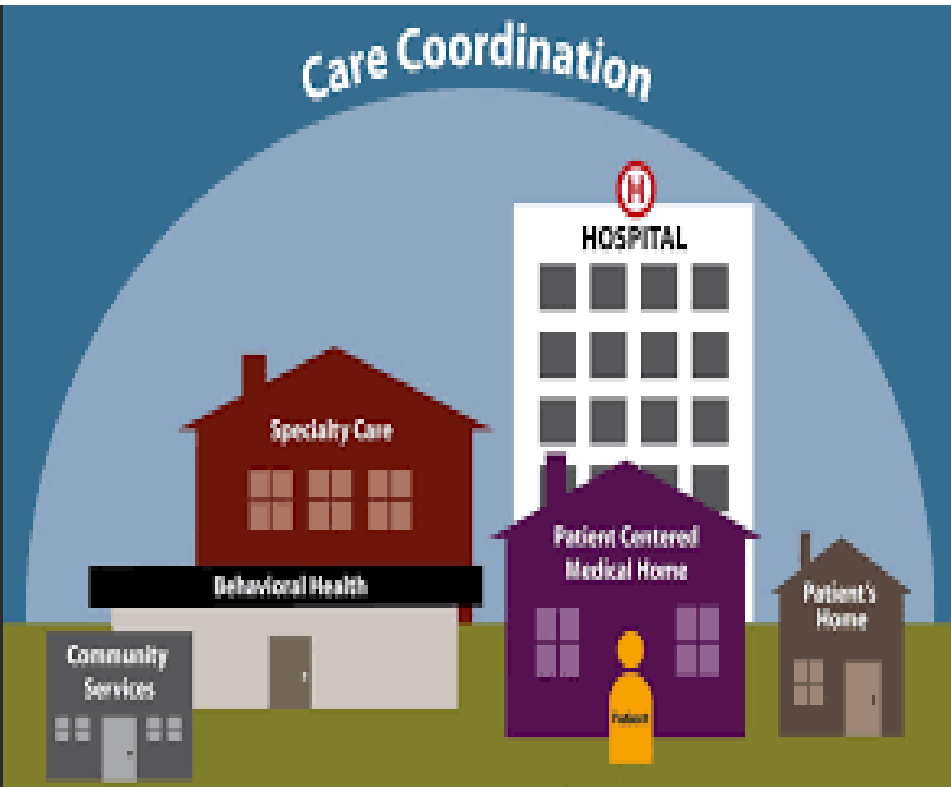
- North Blaby have 1.4 wte SPLW employed by Blaby DC (also involved in a SP Pilot with Blaby DC for complex/high intensity users) **Oct start**
- SB&L have 1wte SPLW employed by Blaby DC (also involved in a SP Pilot with Blaby DC for complex/high Intensity users) **Mid Nov start**
- Cross Counties – 1wte - **Oct Start**
- Oadby & Wigston – 1wte – **Oct Start**
- Rutland – 1wte with Rutland CC – **Out to advert**
- MSV – 1 wte - **interviewed but not yet confirmed a start date**
- Market Harborough et al – 2wte - **Mid Nov Start**

Place Based Model for the Function of Care Coordination within PCN/Neighbourhood Teams



*HEE Care Navigation Competency framework

Care Co-ordinators - WLCCG



- September 2019: Business case supported by F&P Committee



- October 2019: Engagement with LCC ASC & draft implementation plan started

49



- November 2019: Communication to localities/wider partners
- December 2019: Go live

West Leicestershire: Care Coordinators Implementation

Aim: Improving healthcare and wellbeing for people with complex care needs through multi disciplinary team working

