

Phase 3 Covid Response National Guidance

Snapshot view

Accelerating the return of non-Covid services

Fully restore Cancer Services

- Restore the number of referrals for suspected cancer to at least pre-pandemic levels
- Ensure sufficient capacity in diagnostics and endoscopy, using the independent sector, community hubs and rapid access centres
- Expand capacity of surgical hubs to meet demand and deliver in a Covid secure environment
- Fully restart all cancer screening programmes

Recover maximum elective activity possible

- Restore elective activity to between 90-100% of pre-pandemic levels by October
- Develop a week by week plan to optimise use of independent sector capacity
- Follow new streamlined patient self-isolation and testing requirements

Restore service delivery in primary and community services

- Restore activity to usual levels where clinically appropriate
- Address the backlog of immunisations and cervical screenings
- Enhance community services for crisis response and resume safe home visiting care for vulnerable patients that need it

Expand and improve mental health service

- Restore and expand services e.g. IAPT and 24/7 crisis helplines
- Validate system plans for mental health service expansion trajectories
- Continue to reduce the number of people with a learning disability in specialist inpatient settings by providing better alternatives and using Care and Treatment Reviews

Preparing for winter and possible Covid resurgence

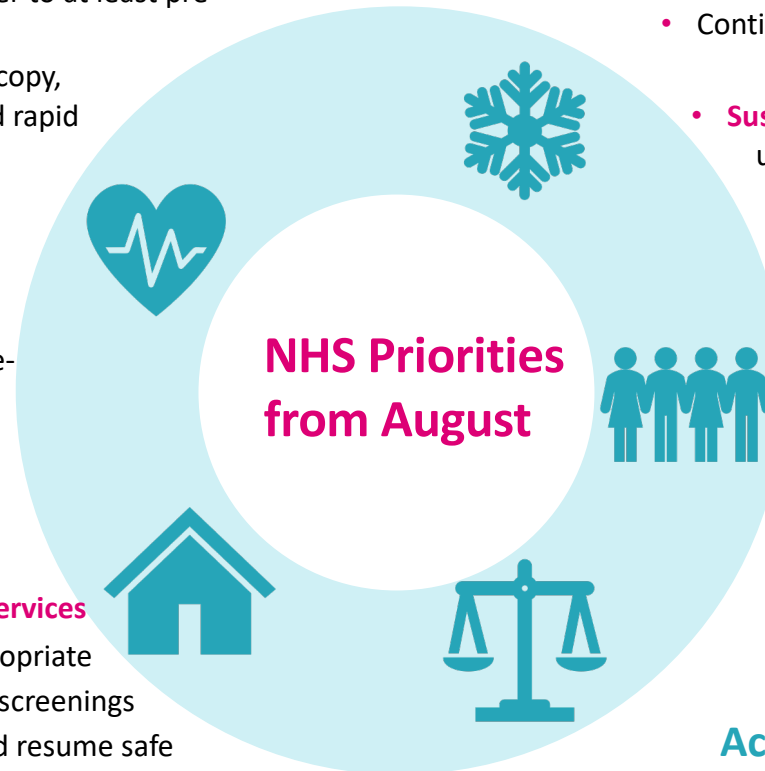
- Continue to follow **good Covid-related practice** to enable safe access to services and protect staff
- Continue to follow **PHE infection prevention and control guidance** to minimise nosocomial infections
- **Sustain current staffing, beds and capacity**, and make use of independent sector and Nightingale hospitals
 - Deliver an expanded **flu vaccination** programme
 - Expand the **111 First offer** and maximise 'hear and treat' and 'see and treat' pathways for 999

Supporting the Workforce

- Deliver the commitments in the **NHS People Plan for 2020/21** including urgent action to address **systemic inequality** experienced by some of our staff including BAME staff
 - Develop a local People Plan to cover the **expansion of staff numbers**, mental and physical support for staff, and setting out **new initiatives to develop and upskill staff**

Action on inequalities and prevention

- **Protect the most vulnerable** from Covid with enhanced analysis and community engagement to mitigate identified risk in the community
- **Accelerate preventative programmes** which proactively engage those at the greatest risk of poor health outcomes
 - **Strengthen leadership and accountability** for tackling inequalities
- Ensure **data is complete and timely** to support understanding and response to inequalities



This page is intentionally left blank