

# The new prison at Glen Parva project newsletter – August 2021



## Project Director's Update

Welcome to the August edition of the Glen Parva Newsletter.

I hope you and your families are enjoying our recent spell of sunshine and are keeping safe and well.

I am pleased to report that we continue to make significant progress with construction works on site and all thirteen buildings are now coming out of the ground at some stage.

With the piling and earthworks now completed, the number of lorry movements to and from site has reduced, allowing the focus to be on the precast structure which is progressing well with 2 buildings now completed and waterproof roofing membranes installed to allow the fit out to follow. Steelwork and cladding continue again with 3 buildings having had the steel structure completed and the brickwork and cladding underway. We have commenced the site wide infrastructure services around the project which supplies and connects all the buildings for gas, electric and data etc. This will lead to an increase number of suppliers and partners coming to site, which I am hoping then leads to additional opportunities for employment and local spend.

Following a visit from the Considerate Constructors Scheme (CCS) monitor, we have confirmed our Ultra Site status, which a number of our supply chain partners have also committed to the Considerate Constructors Charter. The monitor has carried out an independent assessment and has provided me with some very positive feedback.

We were lucky enough to host a visit from the Lord Chancellor the Right Honourable Richard Buckland QC together with the local MP for Blaby, Alberto Costa.

They were interested what we as a project and Lendlease as a company were doing to create job opportunities for the local area and increasing the local spend as well as wider social value benefits and we are pleased to confirm Alberto's feedback from the visit. Mr Costa said; *"I was delighted to join the Justice Secretary in visiting the new state of the art prison in Glen Parva and to see the construction work progressing so quickly. This is a very welcome £286 million Government investment in South Leicestershire which has already helped create hundreds of new jobs for local people, as well as investing £30 million into the local economy, providing a real boost for businesses here in Leicestershire"*.



Together with the Ministry of Justice (MoJ) we constantly feedback best practice from this site which is then shared with the next generation of prison projects.

We can confirm that with the easing of the Covid restrictions nationally, we still maintain our Covid safety plans rigorously on site with employees wearing face masks and maintaining social distancing wherever possible and our priority remains to keep everyone safe.

I am hoping over the last period that you will agree that we have kept any disruption and impact to your daily routines to an absolute minimum but please feel free to email me at [GlenParva@lendlease.com](mailto:GlenParva@lendlease.com) if you have any questions or queries.

Kind Regards,  
Steve

## Do you want to work onsite?

If you wish to register your interest to work on the construction of the project, please contact Benjamin Malpass at the Jobcentre Plus by emailing: [Benjamin.Malpass@dwp.gov.uk](mailto:Benjamin.Malpass@dwp.gov.uk)

The Jobcentre Plus office will send you an Expression of Interest form to complete and return. This will enable the Jobcentre Plus team to keep you updated about employment and training opportunities on the Glen Parva site.

## Western Power Works

Western Power have started works on providing the Glen Parva project with a new power supply. We hope to keep the installation timeframe as short as possible to minimise any impact to anyone and appreciate your patience during these essential works. The installation also improves the local network power resilience and capability for future projects in the local area both domestic and industry.



# Glen Parva Prison Project Newsletter

## Community Benefits Progress

From our updated charts (June 21) below you will see we have continued to make some great progress with our commitments. We have created 125 new jobs and have provided over 1800 days of work placements to people facing challenges to employment, this includes the delivery of pre employment training programmes on site as part of the Lendlease Training Academy.

Our local spend (within 50 miles of the site) in the area has continued to increase and we have achieved 67% of our target of £71,500,000 in just ten months of starting construction works on site. Our priority over the next six months continues to be to identify opportunities for apprenticeships through our supply chain partners.

We hosted a visit from 6 students from the Willow Bank Hospital School. Gemma Martin, one of the staff members from the school said

*"As part of the SUP (Single Use Plastic) Virtual Work Experience Programme, the students at Willow Bank School visited the Glen Parva Prison Project site. This was a great opportunity for the students to see the development under construction and to learn about different careers within construction. It was an enjoyable and informative morning and we couldn't thank the staff enough for being so warm and welcoming".*

One student said, "I found it very informative and I may look at a career in construction".

We look forward to seeing the progress on site and being involved with further activities.

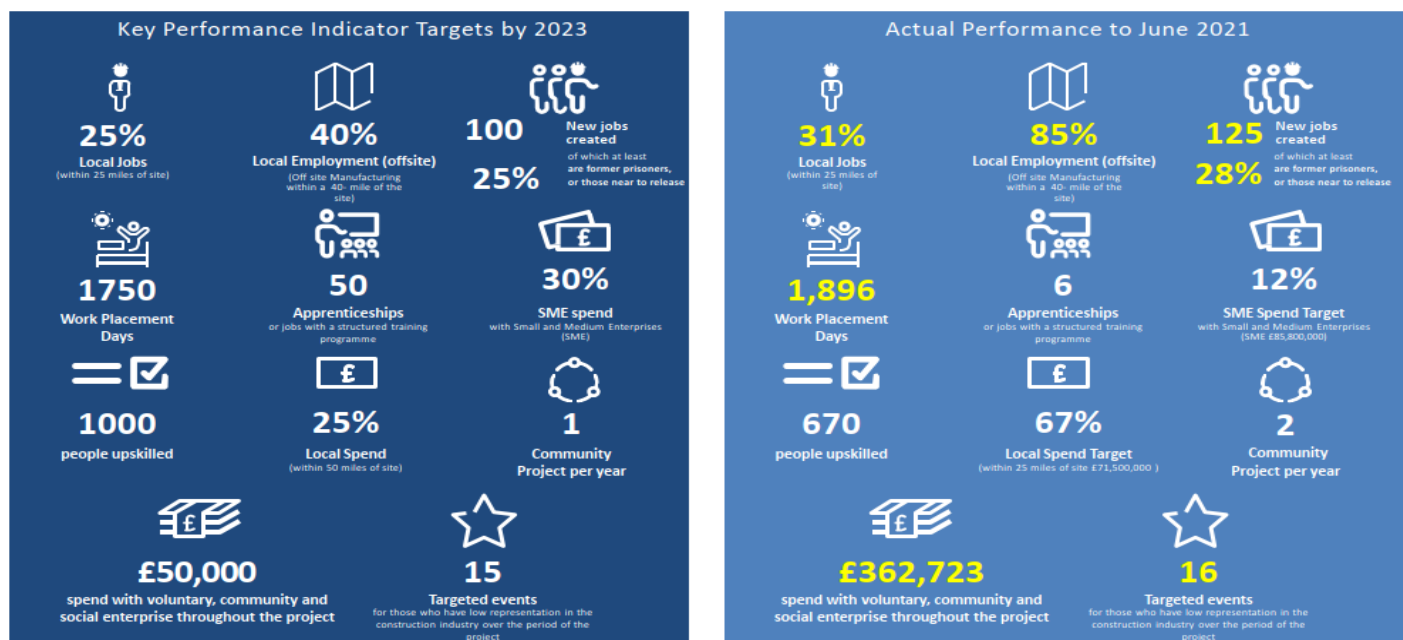
## Blaby District Council – Changing the Face of Construction

Blaby District Council and Lendlease have organised a series of educational visits to the Glen Parva site (Covid restrictions permitting). Four parties of Y11's from Blaby District Schools will visit in October, with most having already chosen construction careers. Made up of predominantly boys, the groups will have an opportunity to use the VR (Virtual Reality) equipment.

It is expected that groups of Y9 girls will get to see the site in early 2022. This is part of an initiative to encourage girls to at least consider construction as a career choice. Blaby District Council have delivered a construction related curriculum support activity called 'Changing the Face of Construction' in local schools for the last four years, where Year 8 girls have the chance to meet women, often from diverse career routes, who work within the construction sector.

Changing the Face of Construction has helped to highlight the vast and diverse careers on offer, provides great examples of skills transfer from one sector to another, and enable girls to learn about opportunities for career progression/ upskilling. In March next year, Lendlease female mentors will support Blaby District Staff in delivering some of these activities.

## Glen Parva Prison Project – Key Performance Targets by 2023 vs Actual Performance





# Glen Parva Prison Project Newsletter

## Meet The Buyer Event – Glen Parva Suppliers Event

Our Mechanical and Electrical contractor Crown House Technologies will be holding a Meet the Buyers event for local businesses on Tuesday 28<sup>th</sup> September 2021 at The Blaby District Council Chambers . At the event they be promoting contract opportunities with Crown House and their supply chain to local businesses in Leicestershire area. We are working with the Leicestershire Local Enterprise Partnership and Federation of Small Businesses and the local authorities to plan this event.

Please see the advert below promoting the event with details of how to register your interest to attend if you are a local business providing the services required.



## The new prison at Glen Parva SUPPLIERS EVENT

28 September 2021  
3 PM to 9 PM

Crown House Technologies and Supply Chain partners would like to invite suppliers located within 50 miles of the Glen Parva site to attend our supplier event at:



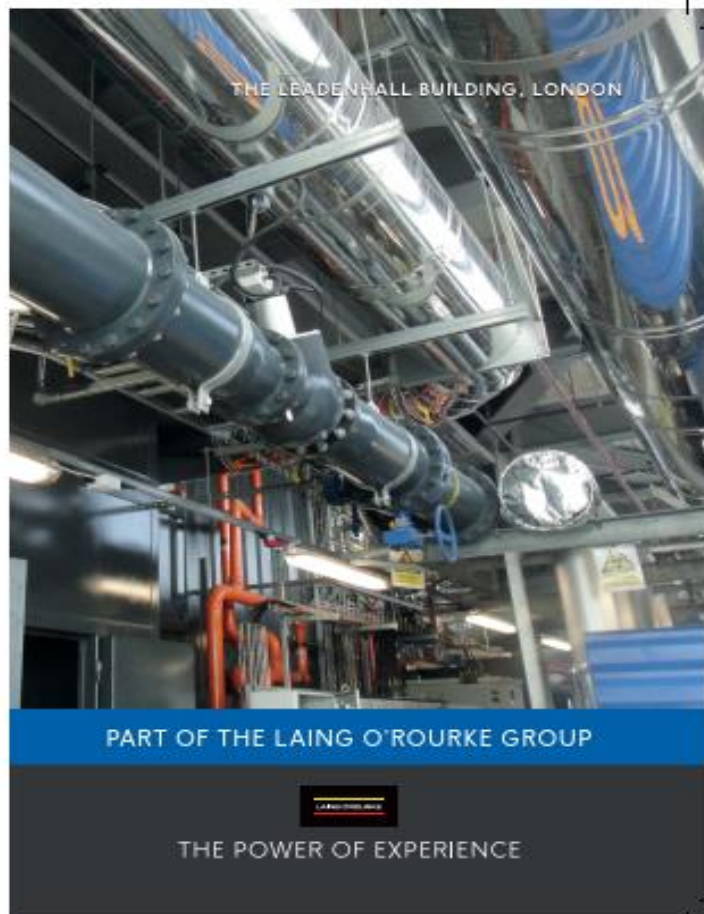
**Blaby District Council  
Council Chambers  
Desford Road  
Narborough LE19 2EP**

The following trades/service areas have been identified as of particular interest to join the team in Jan 2022.

- Mechanical pipe fitters
- Electricians
- Ductwork fitters
- Electrical testing services
- Commissioning services and engineers
- Water treatment services
- Approved gas fitters
- Printing services
- BMS & fire alarms engineers / installers
- Plant and equipment hire services
- Local accommodation (hotels, B&Bs and rentals)

A fantastic opportunity for local SME construction businesses to meet with major buyers involved and secure work! The investment being made by both the public and private sector will be showcased a range of opportunities.

Please register by emailing: [info@crowhouse.com](mailto:info@crowhouse.com)  
We look forward to seeing you there.



## PROJECT CONTACT DETAILS

Lendlease Social Value lead:

Email: [GlenParva@lendlease.com](mailto:GlenParva@lendlease.com)

Ministry of Justice contact:

[GlenParvaEnquiries@justice.gov.uk](mailto:GlenParvaEnquiries@justice.gov.uk)

Website Address: [Lendlease.com](http://Lendlease.com)

Glen Parva Prison Project, Lendlease Site Office, Tigers Road , Glen Parva, Leicester, LE18 4TN

This page is intentionally left blank