

APPENDIX A

Proposed Archives, Collections and Learning Centre

Architect/Design Visuals including Ground and First Floor Layouts
and Specialist Archive Storage Double Decker Mobile Shelving

Figure 1: Proposed **Entrance Area** showing sectional overhead doors for large objects in the museum collections, public entrance to the building and glazed area to the ROLLR searchrooms. Part of ROLLR new-build strongroom visible to the right. (Colours are illustrative at this stage and are to be confirmed)

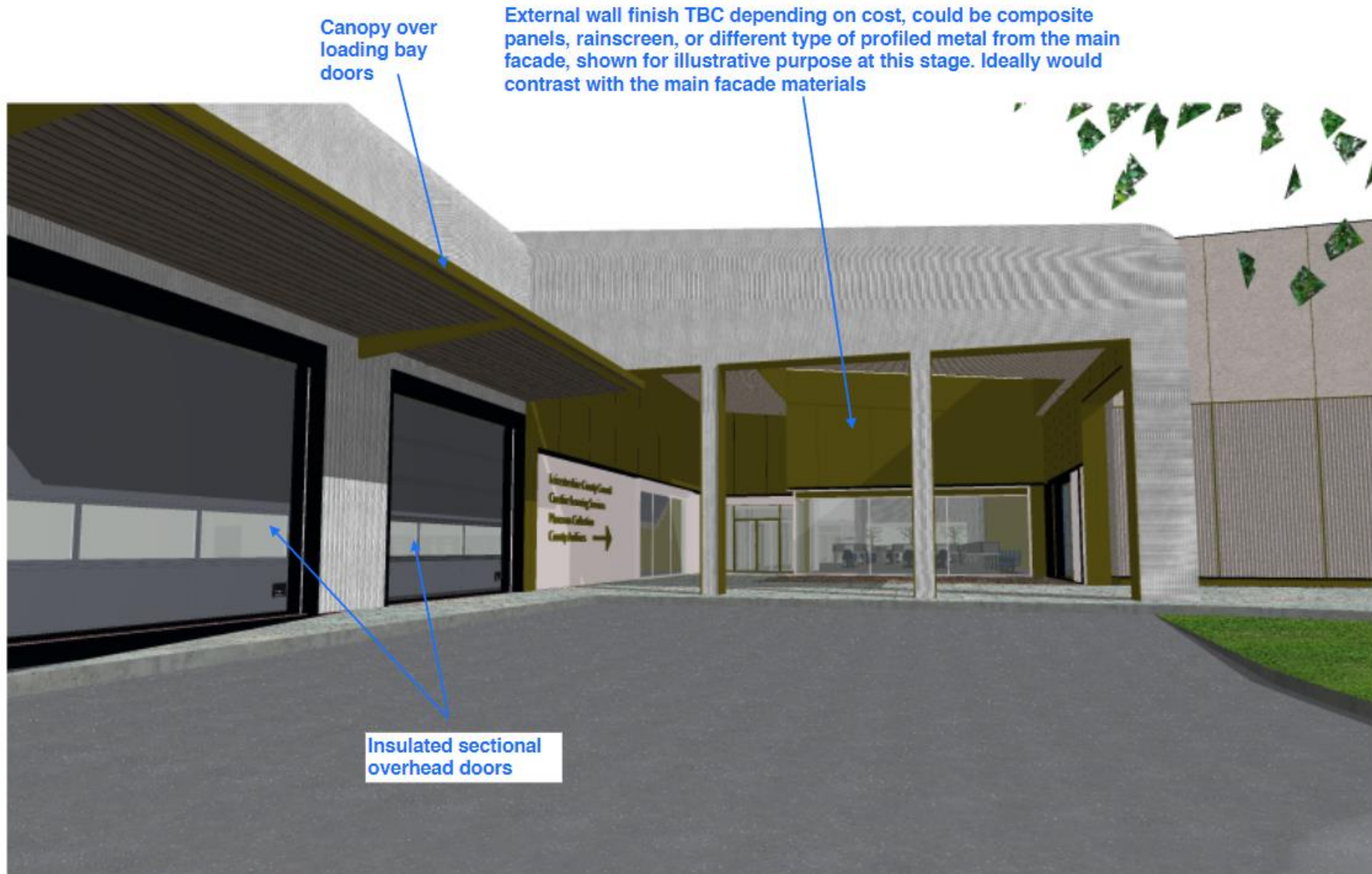


Figure2: Proposed Archive, Collections and Learning Centre – **Aerial View** (south facing aspect) Showing refurbished Eastern Annex on existing footprint and new-build archive strongroom. (Colours are illustrative at this stage and are to be confirmed)

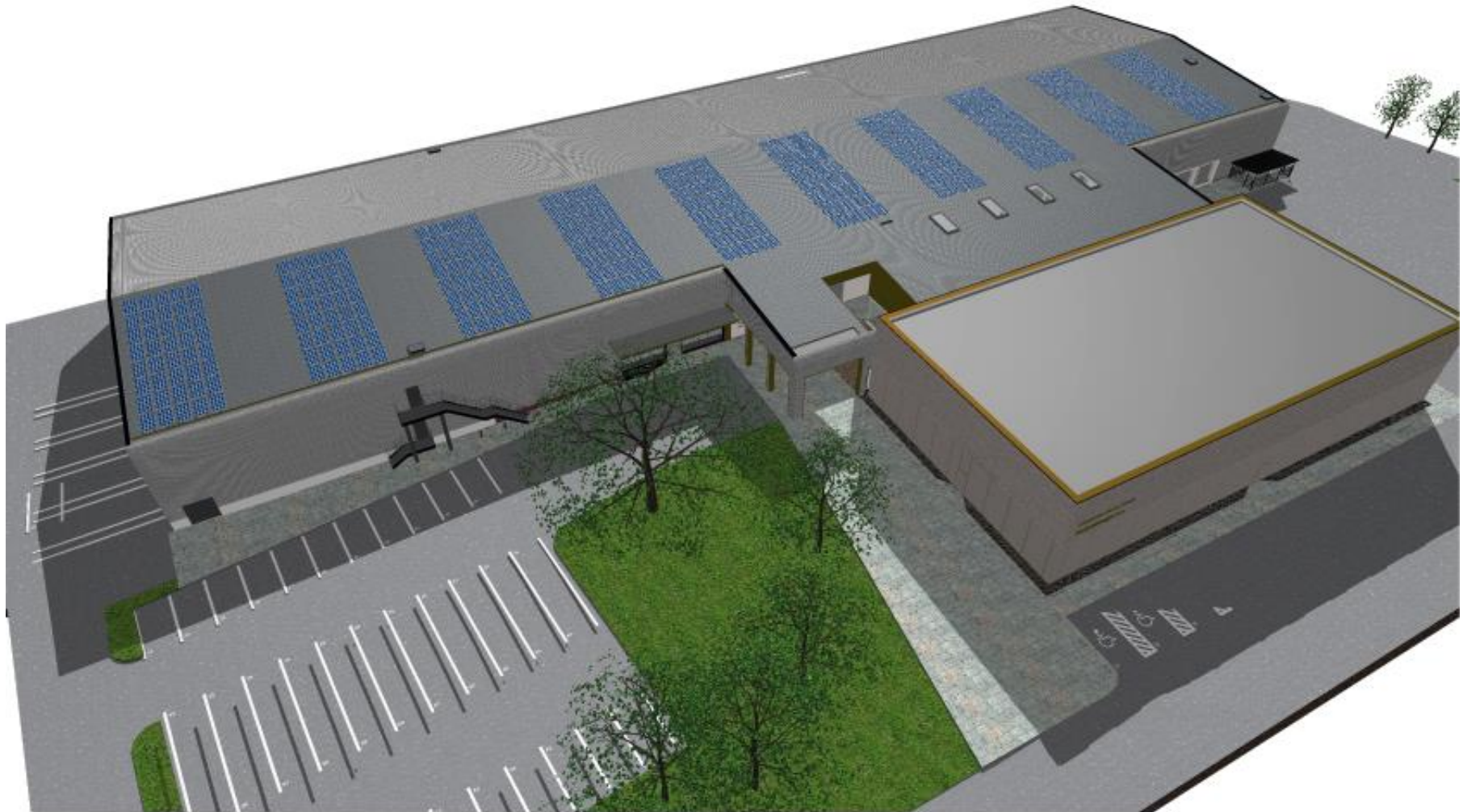


Figure 3: Proposed Archive, Collections and Learning Centre – **Ground Floor** layout design showing spatial allocations and adjacencies.



Figure 4: Proposed Archive, Collections and Learning Centre – **First Floor** design layout showing spatial allocations and adjacencies



Figure 5: Specialist Archive Standard Double-Decker Mobile Racking for use in the ROLLR Strongroom



Figure 6: Specialist Archive Standard Double-Decker Mobile Racking for use in the ROLLR Strongroom



This page is intentionally left blank