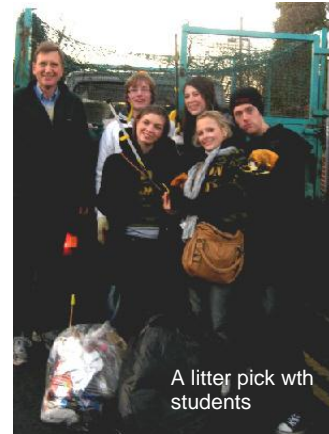




**County Councillor  
Max Hunt**  
**Annual Report 2013/4**  
*A report summarising  
my activities*



## **Council activities**

### **Committees I am serving on at County Hall**

Scrutiny Commission and Labour Group Commissioner  
Constitution Committee  
Employment Committee  
Transformation Board

### **Local committees:**

Charnwood Highways Forum  
Loughborough North West Area Forum  
Loughborough Campus and Community Liaison Group  
LANRAC (Leics & Northants Rail Action Committee)

### **Other relevant bodies**

Charnwood College Governors (to July 2013)  
Ashby Road Estates Community Association (ARECA)  
Thorpe Acre 2000  
Charnwood Borough Council

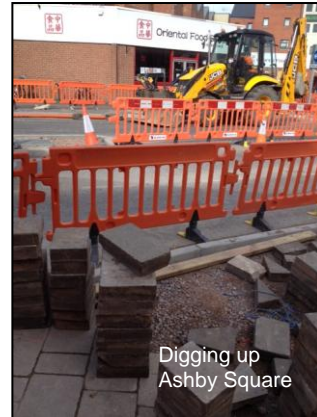
## **Council wide activities**

This has been a tough year for most County Councillors, and particularly those in the Labour Group. Why has that been? Together with nine other Labour members we have had to challenge £110m cuts in grant from the Coalition Government. Local government has been hit more severely than any other public service. In many cases services have been lost and efficiencies have led to a reduction in delivery.

Our response has required in detail understanding of complex areas of service delivery and as Leader of my Group this has required my primary focus. I welcome the opportunity to discuss this and local matters with any constituent at any time.

## **Electoral Division activities**

This year has seen work completed on the Inner Relief Road; town highways improvements, a safer crossing on New Ashby Road and drainage work on a cycleway – all of which I have campaigned for!. I have visited all neighbourhoods and most residents in the south of the Division. I have also engaged regularly with constituents on the University Campus.



## **Main Activities during the past Year**

- ✓ Attendance: All Council Meetings except one and many committee meetings, briefings and meeting with officers...
- ✓ Advising and assisting the campaign against two way bus traffic on Market Place pedestrianised area proposal.
- ✓ Represented residents of Crosswood Close and Clowbridge Drive over new Ashmount Special School construction and car parking, now complete.
- ✓ Liaising with LCC transport planning engineers and residents over traffic management plans for town related to current and future possible developments from CBC.
- ✓ Representing effects of Article 4 Direction (HMOs) on Ashby Road Estate.
- ✓ Regular newsletters to residents, surgeries and ward walks.

See also my various public questions to Council throughout year.

## **Priorities for the immediate future are:**

- Protection for Garendon Park and countryside surrounding Loughborough.
- Stabilise school support services at County Hall and promote partnerships between schools and county council.
- More facilities for young people, particularly on the Ashby Road and the Poets estates.
- Better information to families about services for elderly people and people with learning difficulties,
- Ensure Home to School transport in place where required by pupils.
- Support voluntary organisations and try to ensure that grants and participative budgeting is directed towards social priorities.
- Monitor NHS services, especially Loughborough Community Hospital and UHL A&E and challenge where cuts bite.



- Introduce road safety improvements.
- Progress MML electrification and increase investment in the line through Leics. Safer cycling and better, cheaper bus services.

**Matters raised personally in Council, Scrutiny and Questions:**

**Matters raised at FULL COUNCIL**

- 15/5/13 Question on sharing services with neighbouring County Councils.  
 4/12/13 Questions about Street design and Manual for Streets 2

**Attended:**

Remembrance Sunday Service in Queens Park  
 Queens Park Picnic in the Park

**Visited**

Recharge at Thorpe Acre Church Hall (22/5/13)  
 Charnwood Self-Advocacy Group for people with Learning Difficulties (11/13)  
 Thorpe Acre Residents Assn (TARA)  
 CASE-DA Co-operative and Social Enterprise Development Agency (24/3/14)  
 Leicester City Council Deputy Mayor (12/13)  
 Loughborough Student Union: Consultation on street lighting (12/13)



**Presentations and Training on:**

LCC Planning Training (20/5/13)

**Other matters:**

Significant casework load concerning parking, highways, countryside, planning, footpaths, traffic, schools, including work with residents and students.

Supported Loughborough in Bloom and succeeded in my campaign with Betty Newton to get a Borough wide Parks Warden system,. This needs more development.

Responding to BBC Radio Leics, BBC East Midlands TV, and press enquiries and issuing of press releases and letters to Loughborough Echo and Leicester Mercury.

Please note also that the above campaigning work only covers that with the County Council. Much additional work is not mentioned here because it relates to my work as a Borough Councillor.

Signed: *Max Hunt.*



**Max Hunt CC**  
 Date: April 2014